



# Deslauriers

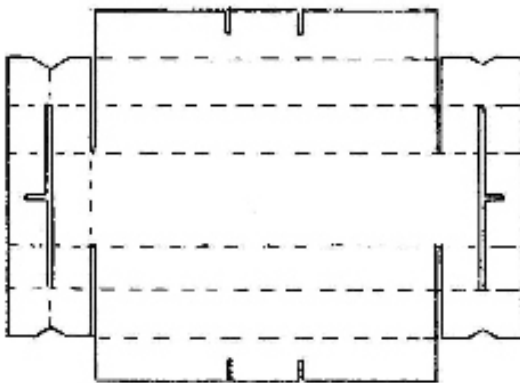
www.deslinc.com

## ECON-O-VOID™ assembly and use instructions

In order to obtain optimum use of Econ-O-Voids, it is important to observe the following:

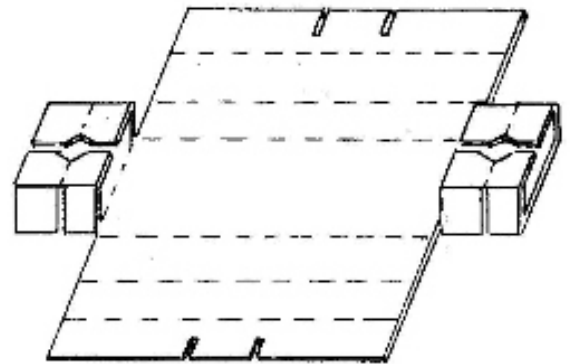
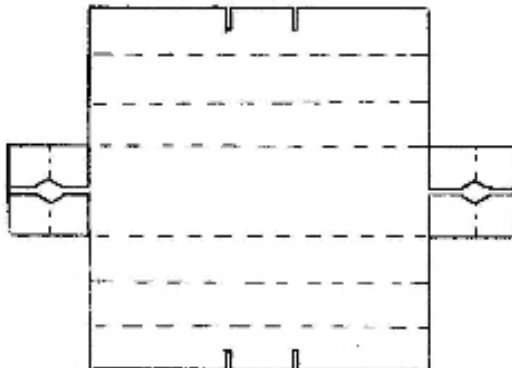
- A. Make certain site is properly graded-level, with good drainage.
- B. Forms should be properly braced with adequate perimeter framing and butted tightly together. i.e., five 12" wide units placed side by side should measure 60" **NOT** 63".
- C. Cover forms with 1/8" hardboard to assist in placement of chairs, rebar, and concrete.
- D. Use planks for walkways to minimize direct traffic on forms.
- E. Place pads under chairs or use chairs with runners to prevent puncturing.
- F. use care with placing concrete.
- G. Store forms in dry area.

### Step 1



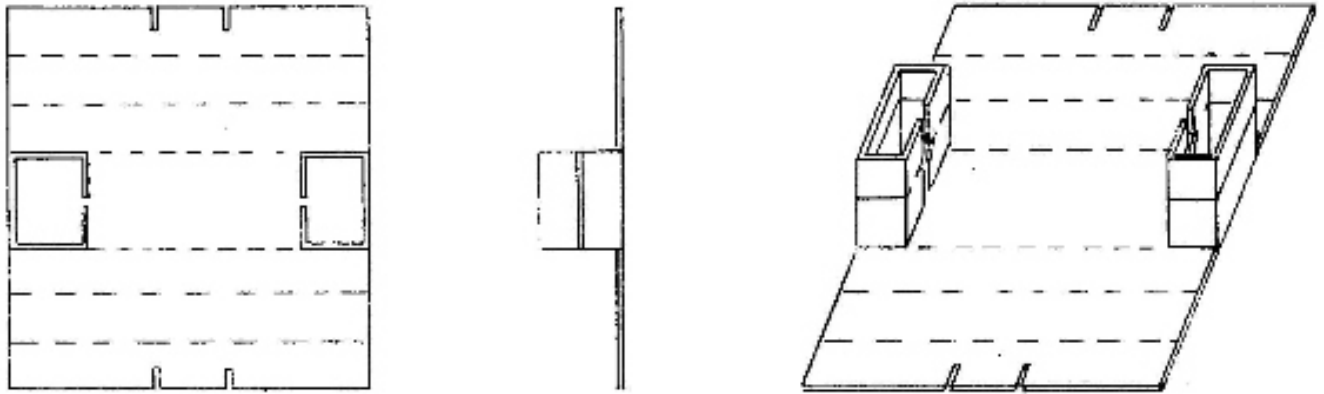
Inspect forms for possible damage in transit, such as rips, holes, etc. Damaged forms should be discarded.

### Step 2



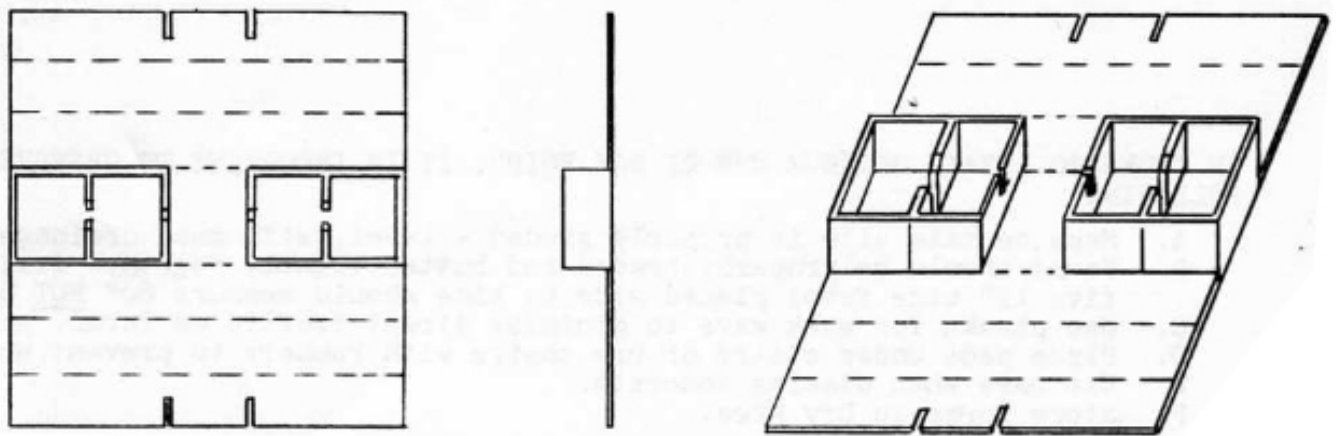
Form both end panel into box shape as shown:

### STEP 3



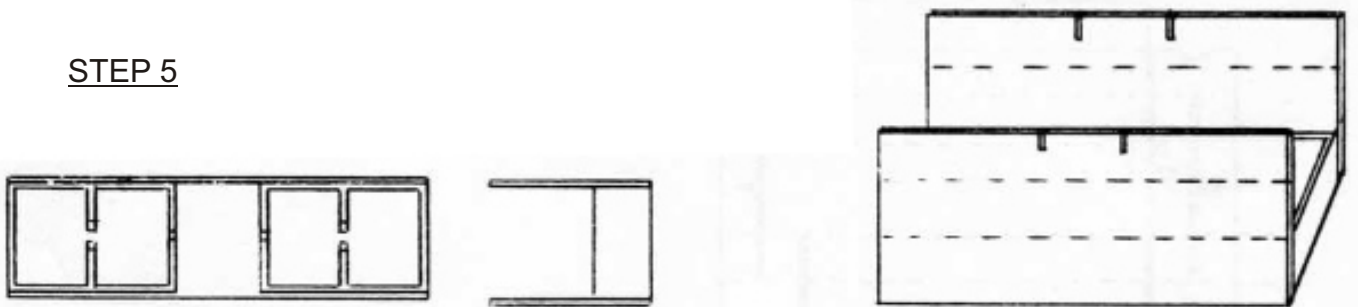
Take box shaped ends from step 2 and fold up 90 degrees until inside of box is flush with cover sheet, as shown.

### STEP 4



Fold top of box shaped ends 180 degrees toward center of form until flush with cover sheet, as shown.

### STEP 5



Fold up each side. as shown.

### STEP 6



Fold each flap toward the center and into the partitions and the form is ready to use.